



BI-FOLD SYSTEM

Refine has designed more than 50 exclusive systems of windows, façades, composite panel, solar protection systems and balustrade. This commitment to innovation allows us to offer high value added products, maximizing energy efficiency, thermal and acoustic insulation and resistance to atmospheric agents.

INNOVATION

TECHNOLOGY

QUALITY

EFFICIENCY

GUARANTEE

SUSTAINABILITY

AESTHETIC

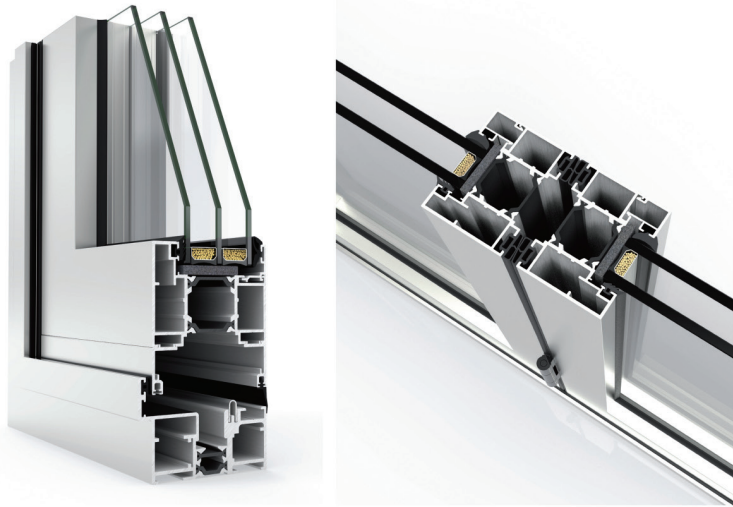
FUNCTIONALITY

DESIGN

COMFORT

R+D+i

BI-FOLD SYSTEM



Bi-fold system with Thermal break specially for enclosing large gaps with the most avant-garde aesthetic.

It has a range variety of compositions up to 14 sashes in outwards & inwards openings.

Allows to inlay bottom frame leaving threshold completely accessible.

- Maximum energy efficiency values: window transmittance from 1,5 (W/m²K)*.
- Maximum tightness: CLASS 9A, which means during 55 minutes, total affluent of 330 liters and wind velocity of 114 km/h, there's no water intake.

CATEGORIES ACHIEVED AT TEST CENTRE*

Air permeability	CLASS 4
Water tightness	CLASS 9A
Wind resistance	CLASS A3

OPENING POSSIBILITIES

Bi-fold up to 14 sashes.

*CONSULT TYPOLOGY, DIMENSION AND GLASS.



RESISTANCE TO ATMOSPHERIC AGENTS [COMFORT]

All of Refine's enclosing systems are tested in the Test Laboratory at the Technological Center to guarantee the best performance in watertightness, air permeability and wind loads, endorsed by the maximum results in its test qualifications.

THERMAL INSULATION [ENERGY EFFICIENCY]

Nowadays energy efficiency in buildings is a demand made, both by the architects, as by the final customer aware of the importance of saving on heating costs and air conditioner. Refine meets such challenge with systems for every climatic area with a high insulation coefficient to ensure the comfort in the residence.



ACOUSTIC INSULATION [SILENCE]

In order to transform the residence into a private space, intimate and free of pollution outdoor acoustics, Refine has designed its enclosing systems with all the latest technological developments necessary to ensure indoors peace and relax.

UNLIMITED COLOUR RANGE [COLOURS]

The whole RAL colour chart in powder coating, exclusive powder coating, metallic, textured, wood effect, more than 100 finishes in anodized. Aluminum on the outside and wood in the inside, two-coloured finishes... An unlimited offer to create a colour harmony at home. Quality labels in every process: QUALICOAT, SEA-SIDE, QUALIDECO and QUALANOD.

AVANT-GARDE AESTHETICS [DESIGN]

We create tailor-made windows and façades for every project. Creativity to answer aesthetically and functionally to each demand. Aesthetic answers to the technical needs. Creativity at the service of habitable environments.



ENCLOSURES FOR LIFE [DURABILITY]

Aluminum is the most durable, long-standing and resistant material of those used in enclosures. Aluminum has the strength and a durability of the things that last a whole lifetime.

SUSTAINABLE SPIRIT [SUSTAINABILITY]

Respect for the environment is Refine's commitment. Using innocuous raw materials and products in all our manufacturing process and the limitless possibility of aluminum recycling, allows us to remove any creation of waste and environmental risks.



07720 774391
 mark@refineinc.co.uk
 www.refineinc.co.uk